



NASPGHAN **FOUNDATION**

For Children's Digestive Health & Nutrition

Mission Statement: The NASPGHAN Foundation funds and supports the professional and patient education and research missions of NASPGHAN.

2023 ANNUAL REPORT



The Mission of the North American Society for Pediatric Gastroenterology, Hepatology and Nutrition is to be a world leader in research, education, clinical practice and advocacy for Pediatric Gastroenterology, Hepatology and Nutrition in health and disease.



Table of Contents

Letter from the President 3

Diversity Equity and Inclusion (DEI) 4

Education / Educational Resources 7

Research / Grants & Awards 13

Volunteers 24

Donations 26

Partners 36

Officers

Menno Verhave MD – Past President
Boston Children’s Hospital, Boston, MA

Ann O. Scheimann MD, MBA – President
Johns Hopkins School of Medicine, Baltimore, MD

Jeannie S. Huang MD, MPH - Secretary Treasurer
Rady Children’s Hospital, San Diego, CA

Board Members

Robert Dahms

Praveen S. Goday MBBS

Benjamin D. Gold MD

Jenifer Lightdale MD

Mercedes Martinez MD

Marjorie Merrick

Elizabeth Mileti DO

Dedrick Moulton MD

Karen F. Murray MD

Maria M. Oliva-Hemker MD

Norberto Rodriguez-Baez MD

Joel R. Rosh MD

Barry Wershil MD

The NASPGHAN Foundation is organized exclusively for charitable, scientific, and educational purposes as defined in section 501(c)(3) of the Internal Revenue Code of 1986 and receives an annual audit.

Copies of the Federal Form 990 Tax Return for organizations exempt from tax are open for public inspection and can be obtained by contacting the National Office.

NASPGHAN Foundation
714 N. Bethlehem Pike | Suite 300
Ambler, PA 19002
Phone: 215-641-9800

<https://naspghan.org/naspghan-foundation> ➔



Dear Colleagues and Friends:

I am honored to present the biennial report of the NASPGHAN Foundation. We are extremely grateful for the collaborative efforts of so many who have kept us navigating forward over the past two years. Although the finances of the Foundation have allowed continuing support of grants and educational activities for NASPGHAN members, the changes in financial markets necessitate collaboration between the financial committees of NASPGHAN and the NASPGHAN Foundation to ensure long term sustainability as the organization enters the next 50 years.

The mission of the Foundation continues to revolve around funding and supporting the professional, patient education and research missions of NASPGHAN via support of innovative research and educational campaigns on behalf of the "NASPGHAN Family" – our membership, our patients, and their families. Our grants program nurtures research in multiple arenas including basic, clinical, and quality-improvement research for NASPGHAN/CPNP and APGNN members as they grow through their careers (young investigator through established investigator) including recent summer research funding for URiM students to plant the seed. Over the years, NASPGHAN's research support has laid the groundwork for advancements in our field and served a critical role in building successful careers for many of our colleagues.

The educational activities supported by the Foundation provide important learning opportunities for our members, our referring primary care colleagues, and our patients and families. The breadth of educational offerings have included webinars, immersion courses (N²U), slide decks and patient-facing materials as outlined in this report. We are grateful for the continued support for these campaigns by our partners which have demonstrated continued success (even during the pandemic).

This report will summarize our current grants program and acknowledge the recipients of our grants and awards.

The foundation for our success hinges upon the efforts of many but starts with an amazing team of individuals who volunteer their time and efforts to the Foundation, including the Executive Committee, Board of Directors, Advisory Board, NASPGHAN committees, along with the leaders and contributors who aid in the review of grants and creation of educational and patient focused education campaigns. And of course, none of this would be possible without the bedrock of NASPGHAN – the talented team in the "home office". We are grateful for the contributions of our Corporate Partners who provide support of educational campaigns and opportunities for career advancement of trainees and junior faculty including DEI initiatives within NASPGHAN. We value the continued partnership with the Crohn's and Colitis Foundation to support pediatric IBD research among young investigators and develop educational materials for families of children with IBD.

Finally, I want to thank the NASPGHAN membership and members of our affiliate organizations who support the Foundation through charitable donations. **"We are NASPGHAN!"** Your engagement and generosity have been critical over the first 50 years of NASPGHAN and essential to the future of our specialty and the health/well-being of the children and families we care for.

Sincerely,

Ann Scheimann MD, MBA
President, NASPGHAN Foundation



Ann Scheimann MD, MBA



DIVERSITY EQUITY & INCLUSION (DEI) INITIATIVES 2022 – 2023

◆ **TEACHING AND TOMORROW UNDERREPRESENTED IN MEDICINE (URiM) PROGRAM**

The Pediatric GI Teaching and Tomorrow Program of NASPGHAN strives to attract the brightest residents to subspecialty training in pediatric gastroenterology, hepatology and nutrition. Due to the excellent interest in this innovative NASPGHAN program, we have seen continual growth in the interest and applications to GI training programs through the years. This program has been recently expanded to provide scholarships to interested 1st and 2nd year pediatric residents and 4th year medical students who self-identify as Underrepresented in Medicine (URiM). In addition to networking with other participants while attending the program’s scheduled sessions, the URiM program attendees are matched up with a NASPGHAN fellow and/or attending physician (a Teaching and Tomorrow Program alumnus) who serves as a point of contact and ambassador to the Annual Meeting. We were able to support 4 students in 2022 and 17 in 2023.

Supported by educational grants from Takeda Pharmaceuticals Inc., Nutricia, Children’s Hospital of Philadelphia and Functional Formularies.

◆ **URiM NASPGHAN/NASPGHAN FOUNDATION MEDICAL STUDENT MENTORED SUMMER RESEARCH PROGRAM**

The URiM NASPGHAN/NASPGHAN Foundation Medical Student Mentored Summer Research Program takes place at multiple sites throughout the U.S. and Canada and provides medical students who self-identify as URiM with a 10-week research experience under the mentorship of basic or clinical scientists with a research focus in pediatric gastroenterology, hepatology, or nutrition. Candidates for these scholarships must have completed at minimum their first year of medical training and be in good standing at accredited medical schools in the U.S. and Canada. Preference is given to students who are seeking a research experience between the first and second years of medical school, though applications from all currently enrolled students are considered. These students are also invited to attend the Annual Meeting, present a poster of their project and participate in the Teaching and Tomorrow Program. We were able to support 4 students in 2022 and 2023.

Supported by an educational grant from Takeda Pharmaceuticals Inc.





EDUCATION

The Foundation supports the educational mission of NASPGHAN through a diverse portfolio of professional and public education initiatives. The Foundation's goal is to educate medical professionals and the public, and to support the development of new knowledge through research. The primary objectives are to improve the quality of life and to improve health outcomes through education, early detection and evidence-based care.

EDUCATIONAL RESOURCES

◆ NASPGHAN LearnOnLine

NASPGHAN LearnOnLine is our go-to site for continuing education, housing all of our educational offerings in one location. Many of the over 200 offerings are available for CME and MOC Part II credit.



NEW IN 2022-2023

Webinars and On-Demand Educational Modules

◆ EGIDs: Beyond the Esophagus

EGIDs are a collection of chronic inflammatory diseases including Eosinophilic Esophagitis (EoE), Eosinophilic Gastritis (EG), Eosinophilic Gastroenteritis (EGE), and Eosinophilic Colitis (EC). Among the EGIDs, EoE has become an increasingly recognized and studied condition. Validated metrics have been established to quantify quality of life, symptoms, histologic and endoscopic findings. In addition, there are well-established, effective treatments. The same cannot be said for EG, EGE, or EC, which lacks well established histologic criteria for diagnosis, and has a more unclear natural history, nor well-established treatments. EGIDs: Beyond the Esophagus brings to light the latest on non-EoE EGID, including the signs and symptoms; the criteria to make a diagnosis; what options exist for therapy, and the potential mechanisms of disease.

Supported by an educational grant from Allakos.

◆ Practical Tips in the Nutritional Management of Children with Cholestatic Liver Disorders: A Webinar for Patients, Families and Caregivers

This webinar explores practical approaches to the nutritional management of children with cholestatic liver diseases, with special tips for patients and caregivers. Participants learn the clinical presentation and long-term implications of malnutrition and fat-soluble vitamin deficiencies in children with cholestatic liver disorders, become acquainted with differences among the currently available formulation to support nutrition in cholestatic babies, and the currently available vitamin supplements and formulations. The lack of insurance coverage for medical food and vitamins is also discussed.

Supported by educational grants from Mirum Pharmaceuticals, Inc., Albireo Pharma, Inc., and Travers Therapeutics.

◆ **Children with Cholestatic Liver Disease: Diagnostics**

Cholestatic jaundice is a rare presentation of various hepatobiliary, metabolic, and genetic disorders. Cholestasis typically presents in the neonatal/infantile period but can also present late in older children or even adults. Early diagnosis and appropriate management of the underlying condition are of paramount importance for optimal prognosis. Diagnosis of cholestasis needs an array of investigations including blood tests, imaging, genetic testing, and invasive procedures like liver biopsy. Liver biopsy is one of the central crucial investigations done in evaluating children with cholestasis, however, can be associated with complications including bleeding. Understanding when to use a liver biopsy in children with cholestasis along with its limitations is extremely important to gain the maximum benefit out of an invasive procedure. Over the last decade, the growth in genetic techniques and the identification of new genes leading to cholestasis in children have evolved significantly and have led to the shrinking of the unidentified etiologies.

This webinar addresses the rapidly evolving field of genetic Cholestasis and when to perform a liver biopsy, its utility, and limitations.

Supported by educational grants from Albireo Pharma Inc., Mirum Pharmaceuticals, Inc., and Travere Therapeutics.

◆ **Medical Management of Chronic Pancreatitis in Children: Maximizing Treatment and Improving Outcomes**

Chronic pancreatitis (CP) in children is associated with significant morbidity and poor quality of life. The incidence of CP in children has risen over the past few decades and is approaching that seen in the adult population. CP is an inflammatory disease resulting in irreversible changes in the pancreas including acinar cell loss, fibrosis, ductal changes, and calcifications. Patients with CP may suffer from abdominal pain and complications of exocrine pancreatic insufficiency (EPI) and diabetes mellitus. Medical Management of Chronic Pancreatitis in Children: Maximizing Treatment and Improving Outcomes brings together leading experts to discuss how to ensure that childhood CP is recognized early and its sequelae treated promptly.

Supported by an educational grant from AbbVie.

◆ **Removing Dieting from Diet Therapies in Pediatric GI (A CPNP Webinar)**

Obesity was declared an epidemic by the CDC in the 1990s, yet significant and sustained weight loss continues to be problematic for Americans as a population. Critical factors are often overlooked when addressing obesity such as racial discrimination, disability status, and environmental factors. In conjunction, “weight stigma”, or bias that devalues people with larger bodies, can cause increased morbidity and mortality, independent of BMI. As a response, a movement is taking place, known by several names including “anti-diet” or “intuitive eating”. This is an inclusive movement that recognizes one’s size as part of his or her identity as much as race, national origin, and sexuality. It considers social, economic, and physical barriers to obesity, rather than assuming lack of willpower or education are the cause. It’s about recognizing “diet culture” and dismantling the anti-fat and pro-thin messages that infiltrate society. This informative and interactive webinar helps healthcare providers recognize weight stigma and promote a positive relationship with food, particularly in patients with GI-related health conditions and those following therapeutic diets.

Supported by an educational grant from Abbott.

◆ **The What, How and Ifs of Optimizing Early Childhood Growth and Long-Term Outcomes: Part One**

Understanding normal growth and development is critically essential for quick recognition and intervention for deviations in childhood growth and nutrient intake practices associated with increased risk for disease and poor long-term health. Nutrient and non-nutrient factors influence health outcomes throughout the lifecycle. This webinar and podcast series, The What, How and Ifs of Optimizing Early Childhood Growth and Long-Term Outcomes discusses how to implement nutrient and non-nutrient factors that optimize long-term health, recognize childhood growth and nutrient intake patterns associated with disease, childhood microbiome and long-term risk for disease, and early diagnosis and management strategies for childhood feeding disorders.

Supported by an educational grant from Reckitt Mead Johnson Nutrition.

◆ **The What, How and Ifs of Optimizing Early Childhood Growth and Long-Term Outcomes: Part Two**

Understanding normal childhood growth is essential for quick recognition and intervention for deviations in growth and nutrient intake associated with long-term risk for disease and poor health. Therefore, the ‘what, how, and ifs of optimizing childhood growth and long-term outcomes’ webinar series addresses the knowledge and practice gaps about nutrient and non-nutrient factors essential for optimizing long-term health outcomes.

The first webinar addresses the early life nutritional factors that promote healthy growth, the development of a microbiome associated with optimized long-term health, and the recognition of early childhood growth patterns related to long-term risk for overweight and obesity. This Part Two webinar focuses on a nutritional assessment approach that quickly recognizes disease, nutritional management of childhood feeding disorders, and principles and strategies for weaning children from dependence on tube feeds.

Supported by an educational grant from Reckitt Mead Johnson Nutrition.

◆ **Bowel Sounds Episodes on Early Nutrition**

Bowel Sounds is a podcast on all things related to pediatric gastroenterology, hepatology, and nutrition. Episodes feature interviews with experts offering clinical and academic pearls and career advice with something for everyone regardless of career stage or discipline. New episodes are released every other Monday. As a companion piece to the webinars, two Bowel Sounds episodes which focused on early childhood nutrition included: Early Life Nutrition and Impact on Childhood Development and The Role of the Microbiome in Healthy Infant and Early Childhood Nutrition.

Supported by an educational grant from Reckitt Mead Johnson Nutrition.

◆ **Children with Cholestatic Liver Disease: Nutrition**

Children with cholestatic liver diseases have unique nutritional requirements. Without bile reaching their intestines, they often suffer from fat-malabsorption and associated consequences. As a result, they require formulas with special fat preparations, as well as intensive monitoring to ensure adequate growth. They also often have fat-soluble vitamin deficiencies requiring aggressive supplementation. In this webinar, nutritional considerations in children with cholestasis are discussed, with special emphasis on nutritional support and vitamin/micronutrient deficiencies.

Supported by educational grants from Albireo Pharma Inc., Mirum Pharmaceuticals, Inc., and Travere Therapeutics.

◆ **Children with Cholestatic Liver Disease: Pruritis Management**

Pruritus is a common complication of cholestatic liver disease that can significantly impair quality of life. Intractable pruritus is an indication for liver transplant regardless of PELD/MELD score. The pathophysiology of pruritus is complex. Several medications serve as standards for treatment, and recent advances in quantification has allowed for rigorous and controlled study of new medications. In certain circumstances, liver transplant can be avoided or delayed with surgical biliary intervention.

Supported by educational grants from Albireo Pharma Inc., Mirum Pharmaceuticals, Inc., and Travere Therapeutics.

◆ **Hepatitis C Slide Set and Grand Rounds**

HCV infection in children is frequently unrecognized. Recently proposed universal testing strategies during pregnancy need to be implemented, and although liver disease is generally mild in children, chronic hepatitis and cirrhosis does occur. There is a wide range of pressing needs regarding screening, diagnosis, and increasing awareness in order to achieve the ultimate goal of disease eradication. Components of the program include an informational slide deck, a thirty-city Grand Rounds program, and two American Academy of Pediatrics chapter webinars in New York and Maryland with the goal of increasing HCV awareness. The slide set is available to members on LearnOnline for CME and MOC Part II credit. In addition, new patient information has been added to the GIKids website.

Supported by an educational grant from Gilead Sciences.

◆ NASPGHAN Nutrition University (N²U)

This course is designed to provide specialized nutrition education in areas associated with the practice of pediatric gastroenterology and nutrition to 3rd year fellows, junior faculty and dietitians. It targets two groups: candidates who received minimal nutrition education during their fellowship or who plan to pursue pediatric nutrition as their career focus. The course includes “hot” topic discussions and a nutrition Jeopardy competition, along with a series of challenging cases which are presented in a small group setting. Topics covered include diagnosis of pediatric malnutrition; failure to thrive and feeding disorders; micronutrient deficiencies; critical care nutrition; short bowel syndrome/malabsorption obesity; nutritional management of cystic fibrosis; food allergy and eosinophilic esophagitis; nutritional therapy in inflammatory bowel disease and nutrition support in chronic liver disease.

Supported by an educational grant from Nutricia North America.

◆ NASPGHAN Fellows Toolbox Website



The NASPGHAN Toolbox website is designed to deliver pediatric gastroenterology information to care providers in a format that is user friendly. The toolbox provides easy access to clinical guidelines for pediatric gastroenterologists and trainees and is now available as a distinct website linked from the NASPGHAN website. Features of the Toolbox include algorithms to navigate clinical guidelines for various diseases; high quality images of GI pathology; helpful tables on managing nutritional needs; scores and calculators to assist in calculating important pediatric GI scores; and a convenient search feature.

Supported by an educational grant from Reckitt Mead Johnson Nutrition.

◆ Junior Faculty Conference (December 2022 and 2023)

NASPGHAN and the NASPGHAN Foundation organized a stand-alone conference devoted to the career and professional development of our members at a junior level in their professional career, i.e. 2 to 7 years out of fellowship training. This conference addresses ongoing professional development for members at the junior level of their career, continues to nurture and augment existing and new professional relationships and collaboration, and covers such topics as expanding self-awareness and personal leadership styles, improving communication, diversity and inclusion, increasing financial acumen and strategic planning, negotiation strategies, and more.

Supported by an educational grant from Fresenius Kabi.

◆ Digital Interactive Gastroenterology Education Suite for Trainees (DIGEST) (Coming soon)



DIGEST is a free, online curriculum for resident-level learners in pediatric gastroenterology. DIGEST allows learners to asynchronously participate in knowledge transfer of core gastroenterology topics and increase confidence and skills related to general pediatric gastroenterology procedures.

Supported by an educational grant from Abbott.

◆ Blenderized Tube Feeding Patient Education Materials and Tik Tok (Coming Soon)

Blenderized tube feedings (BTF) consist of whole foods and purees typically mixed in a blender and provided through a feeding tube as either the sole source of nutrition or as part of the nutrition support regimen. The blend may range from being prepared from a homemade recipe to a commercial formula mixed with pureed baby food, or any variety of commercially available ready to use BTFs. BTF can improve volume tolerance, facilitate the transition from enteral to oral feedings and has been shown to reduce pulmonary and gastrointestinal hospitalization risks in children and adults. Despite these results, apprehensions have been raised regarding microbial contamination, concerns around safety, nutritional adequacy, and deficiencies or surplus, and lack of consistency on clinical outcomes.

To better address the gaps in knowledge and to increase awareness and to familiarize our pediatric gastroenterologist members and dietitians with BTF, the NASPGHAN Foundation and CPNP created an educational material patient information handout to be included under digestive topics on the GIKids website (English, Spanish and French) with a complementary TikTok format given by RDs (CPNP) discussing these important topics.

Supported by an educational grant from Functional Formularies.

◆ EoE Patient Education Video (Coming Soon)

Children and young adults experience learning through a variety of platforms, and today’s youth are particularly exposed and reliant on visual forms of learning. This educational video on EoE directed at children and young adults with the disease has the potential to increase health literacy, encourage a constructive dialogue about the disease between parents and their children, and ultimately increase compliance and improve medical outcomes.

Supported by an educational grant from Takeda Pharmaceuticals, Inc.

◆ Children with Cholestatic Liver Disease: Liver Disease Transplantation (Coming-December 2023)

It is important to correctly assess the point at which liver disease cannot be managed by medical therapies alone and a transplant is warranted. The risks and benefits of transplantation and the exchange of one chronic disease state to another must be discussed with families. This webinar, the fourth in a four-part series on Children with Cholestatic Liver Disease, discusses indications for a liver transplant and post-transplant management in children with cholestasis, with particular emphasis on organ allocation.

Supported by educational grants from Albireo Pharma Inc., Mirum Pharmaceuticals, Inc., and Travers Therapeutics.





RESEARCH

The NASPGHAN Foundation is dedicated to:

- ◆ Advancing medical knowledge and technology
- ◆ Caring for patients with digestive disorders
- ◆ Educating physicians and the public
- ◆ Supporting affected children and their families

While broad in nature, these activities are integrally linked and rely on research for their advancement. In this context, the NASPGHAN Foundation has been a source of research support and leading partners with government, industry, and relevant agencies to help fund research initiatives.

GRANTS AND AWARDS

The future of our subspecialty rests with its trainees and young professionals. A pipeline of research talent into NASPGHAN will ensure the long-term vitality of our profession as practitioners of state-of-the-art, evidence-based medicine.

The Foundation has awarded more than 175 investigator-initiated grants totaling more than \$12,000,000 to NASPGHAN members with an outstanding track record of converting these awards into NIH and CIHR-funded grants.

NASPGHAN Foundation/Alcresta Research Award for the Study of Pancreatic Disease in Children for Pediatric GI Fellows & Junior Faculty

This award will support studies focused on improving patient outcomes in areas of unmet medical needs with a focus on pancreatic insufficiency or fat malabsorption, which results in malabsorption common in cystic fibrosis, digestive cancers, preterm birth, and other serious diseases.

◆ **2022 – Zachary Sellers MD, PhD**

Stanford University, Palo Alto, CA

A COMPLEX ORGANOID MODEL TO ELUCIDATE THE RELATIONSHIP BETWEEN PANCREATITIS AND AUTOIMMUNE INTESTINAL DISEASE CO-OCCURRENCE

◆ **2023 – Vikram Raghu MD, MS, UPMC**

Children's Hospital of Pittsburgh, Pittsburgh, PA

HEALTH UTILITY MEASUREMENT IN PEDIATRIC INTESTINAL FAILURE

Supported by an educational grant from Alcresta Therapeutics, Inc.



Zachary Sellers MD, PhD



Vikram Raghu MD, MS, UPMC

**Crohn's & Colitis Foundation/NASPGHAN Foundation
IBD Young Investigator Award**

This grant, in partnership with the NASPGHAN Foundation and the Crohn's & Colitis Foundation, is available to research fellows or junior faculty. Applications must propose original clinical, translational, epidemiological, or basic scientific research that is related to pediatric inflammatory bowel disease.

- ◆ **2022 – Lauren Collen MD**
Boston Children's Hospital, Boston, MA
CHARACTERIZATION OF DEFECTIVE STAT3 ACTIVATION IN PATIENTS WITH VEO-IBD
- ◆ **2023 – Valentina Poli PhD**
Boston Children's Hospital, Boston, MA
NFAT ACTIVATION IN PLATELETS CONTROLS IBD SEVERITY



Lauren Collen MD



Valentina Poli PhD

**NASPGHAN Foundation George Ferry
Young Investigator Development Award**

This grant is available to junior faculty to support research activities that have the potential for evolution to an independent research career in pediatric gastroenterology, hepatology or nutrition. The award supports a meritorious research project in the clinical or basic sciences to study the diseases of the gastrointestinal tract, liver or pancreas and nutritional disorders in children.

- ◆ **2022 – Alyssa Kriegermeier MD**
Ann and Robert H. Lurie Children's Hospital of Chicago, Chicago, IL
DEFINING AGE-DEPENDENT DIFFERENCES IN XBP1S FUNCTION AND APOPTOSIS IN MURINE MODELS OF CHOLESTASIS
- ◆ **2023 – Marisa Gallant Stahl MD, MSCS**
Children's Hospital Colorado, Aurora, CO
GENETIC RISK PROFILES OF CELIAC DISEASE IN DOWN SYNDROME

Supported by donations from the NASPGHAN membership.



Alyssa Kriegermeier MD



Marisa Gallant Stahl MD, MSCS

**NASPGHAN Foundation/Reckitt-Mead Johnson
Nutrition Research Young Investigator Development Award**

This grant is available to junior faculty to support research activities that have the potential for evolution to an independent research career in pediatric gastroenterology, hepatology or nutrition. This grant is awarded to support a meritorious basic or clinical research project relating to nutrition in infancy, childhood or adolescence.

- ◆ **2022 – Jason (Yanjia) Zhang MD, PhD**
Boston Children's Hospital, Boston, MA
THE ROLE OF THE MICROBIOME IN THE GUT-BRAIN SATIETY AXIS
- ◆ **2023 – Naomi Tjaden MD, PhD**
Children's Hospital of Philadelphia, Philadelphia, PA
DEFINING MECHANISMS AND DISCOVERING MEDICINES: DIET-DRIVEN DYSBIOSIS INFLUENCES SURVIVAL IN HIRSCHSPRUNG DISEASE ASSOCIATED ENTEROCOLITIS

Supported by an educational grant from Reckitt Mead Johnson Nutrition.



Jason (Yanjia) Zhang MD, PhD



Naomi Tjaden MD, PhD

**NASPGHAN Foundation
Mid-Level Career Development Award**

The mid-level career development award is for NASPGHAN members pursuing research in pediatric gastroenterology, hepatology and nutrition and are at a midlevel in their career. The grant funds the advancement of research careers for applicants with significant promise in their mid-years as faculty.

- ◆ **2022 – Michelle Maddux PhD**
Children's Mercy Hospital and Clinic, Kansas City, MO
ADHERENCE MONITORING AND INTERVENTION IN PEDIATRIC HEALTHCARE: DEVELOPMENT AND IMPLEMENTATION OF A CLINICAL DECISION SUPPORT SYSTEM
- ◆ **2023 – Amy Feldman MD**
Children's Hospital Colorado, Aurora, CO
LIVING DONOR LIVER TRANSPLANT:
IS IT A COST-EFFECTIVE OPTION FOR CHILDREN IN NEED OF TRANSPLANTATION?



Michelle Maddux PhD



Amy Feldman MD

**NASPGHAN Foundation/AstraZeneca
Research Award for Disorders of the Upper Gastrointestinal Tract**

This grant will provide support for studies focused on the epidemiology, pathogenesis, natural history, genetics, diagnosis and management of peptic disorders and other diseases of the upper gastrointestinal tract in children. Diseases that are relevant to this grant include, but are not limited to gastroesophageal reflux, reflux esophagitis, eosinophilic (allergic) esophagitis, motility disorders of the upper gastrointestinal tract, Helicobacter pylori infection with or without ulceration, non-ulcer dyspepsia, and non-bacterial ulcer diseases. Applicants at any career level may apply.

◆ **2022 – Amanda Muir MD**

Children's Hospital of Philadelphia, Philadelphia, PA
ADENOSINE SUPPORTS EPITHELIAL HOMEOSTASIS IN EOSINOPHILIC ESOPHAGITIS

Supported by an educational grant from AstraZeneca.

NASPGHAN Foundation/EvoEndo Medical Research Award for the Study of Unsedated Upper Gastrointestinal Tract Endoscopy in Children

This award provides support for two years of studies focused on unsedated upper gastrointestinal tract endoscopy in children. Relevant areas of interest related to unsedated upper gastrointestinal tract endoscopy include but are not limited to: technology adoption, safety, cost/economic assessments, feasibility, efficacy, quality improvement, and novel indications. Any pediatric gastrointestinal process may be the target of the study.

◆ **2023 – Catharine Walsh MD**

The Hospital for Sick Children, Toronto, Ontario, Canada
and Lisa Mahoney MD
Boston Children's Hospital, Boston, MA

DEVELOPMENT AND VALIDATION OF A NOVEL OBJECTIVE SKILLS ASSESSMENT TOOL FOR THE EVALUATION OF UNSEDATED PEDIATRIC TRANSNASAL ENDOSCOPY (NOSE UP Study)

Supported by an educational grant from EvoEndo.

**NASPGHAN Foundation/Takeda Pharmaceuticals America, Inc.
Research Innovation Award**

This grant funds innovative, high-impact research in pediatric gastroenterology, hepatology and nutrition. The intent of this research award is to stimulate scientific inquiry in an area that is exceptionally innovative and has the potential to impact the field in a highly novel manner.

◆ **2023 – John Fortunato, Jr. MD**

Ann and Robert H. Lurie Children's Hospital of Chicago, Chicago, IL
A NOVEL DIGITAL HEALTH APPROACH TO ASSESSMENT OF PEDIATRIC DISORDERS OF GUT-BRAIN INTERACTION (DGBIs)

Supported by an educational grant from Takeda Pharmaceuticals America, Inc.



Amanda Muir MD



Catharine Walsh MD



Lisa Mahoney MD



John Fortunato, Jr. MD

**NASPGHAN Foundation
Innovations in Clinical Care Grant**

The aim of this grant is to encourage and support the development of innovative approaches to optimize the quality of care and health care delivery to children with digestive diseases by the clinically focused pediatric gastroenterologist.

◆ **2022 – Sarah Lowry MD**

Johns Hopkins University, Baltimore, MD

ROLE OF CYTOCHROME P450 GENOTYPES IN IDENTIFYING OFFENDING DRUGS IN DRUG-INDUCED LIVER INJURY IN CYSTIC FIBROSIS POPULATION

◆ **2022 – Jaclyn Siegel DO**

Baylor College of Medicine, San Antonio, TX

HOME EMPOWERMENT RESPONSE ORGANIZATION (HERO) CENTER: IMPROVING QUALITY OF DISCHARGE EDUCATION FOR PEDIATRIC PATIENTS WITH ENTERAL FEEDING TUBES



Sabina Ali MD



Hilary Michel MD

◆ **2023 –**

Sabina Ali MD

UCSF Benioff Children's Hospital, San Francisco, CA

and Hilary Michel MD

Nationwide Children's Hospital, Columbus, OH

SToP VTE: STANDARDIZED TOOL FOR PROPHYLAXIS VTE

**NASPGHAN Foundation/QOL Medical Research Award
for the Study of Disorders Associated with
Carbohydrate Maldigestion/Malabsorption in Children**

This award provides funding for studies focused on disorders of carbohydrate (CHO) maldigestion/malabsorption in children, either primary or secondary. Relevant conditions include, but are not limited to, lactose intolerance, congenital sucrose-isomaltase deficiency, congenital enteropathies that impact intestinal epithelial cell function, or inflammatory conditions affecting CHO absorption.

◆ **2022 – Anna Hunter MD**

Oregon Health and Science University, Portland, OR

APPROACH TO DIETARY FRUCTOSE INTOLERANCE AS A DYSBIOTIC STATE IN CHILDREN, CLINICAL INTERVENTION OF DECREASING ADDED SUGAR INTAKE COMPARED TO LOW FODMAP DIET. IMPACT ON MICROBIOME AND METABOLOME

◆ **2023 – Ruben Colman MD**

Stanford University School of Medicine, Palo Alto, CA

LEVERAGING MICROBIAL PHARMACODYNAMIC BIOMARKERS TO GUIDE PRECISION DOSING FOR CHILDREN WITH CROHN'S DISEASE

Supported by an educational grant from QOL Medical, LLC.



Sarah Lowry MD



Jaclyn Siegel DO



Anna Hunter MD



Ruben Colman MD

**NASPGHAN Foundation/CPNP
Nutrition Research Grant**

This grant is available to pediatric dietitians to support research activities that have the potential to advance the nutrition care of patients and families of children with nutritional disorders.

◆ **2022 – Sharon Weston MS, RD, LDN**

Boston Children’s Hospital, Boston, MA

UTILIZATION OF A HOSPITAL-BASED FOOD PANTRY AND ASSOCIATED NUTRITION EDUCATION AND COOKING PROGRAM FOR PATIENTS WITH CELIAC DISEASE

◆ **2022 – Nicole Misner MS, RD**

University of South Florida, Tampa, FL

A SINGLE CENTER INITIATIVE TO IDENTIFY PREVALENCE OF AND DIAGNOSES ASSOCIATED WITH FOOD INSECURITY AMONGST PEDIATRIC GASTROENTEROLOGY PATIENTS



◆ **2023 – Jennifer Smith MS, RD, CSP, LD, LMT**

Nationwide Children’s Hospital, Columbus, OH
PREVALENCE OF AVOIDANT/RESTRICTIVE FOOD INTAKE DISORDER (ARFID) IN ADOLESCENTS WITH INFLAMMATORY BOWEL DISEASE (IBD)

Supported by an educational grant from QOL Medical, LLC.

Jennifer Smith MS, RD, CSP, LD, LMT

**NASPGHAN Foundation/APGNN
Susan Moyer Nursing Research Grant**

This grant is available to pediatric gastroenterology, nutrition and hepatology nurses to support research activities that have the potential to advance nursing care of patients and families of children with gastrointestinal, hepatobiliary, pancreatic or nutritional disorders. The grant is awarded in support of meritorious research projects to study the nursing care of families and children with pediatric gastrointestinal, hepatobiliary, pancreatic or nutritional disorders.

◆ **2022 – Mary Gallotto RN, BSN, CPN**

Boston Children’s Hospital, Boston, MA

HOME PARENTERAL DIGITAL RE-EDUCATION CURRICULUM

◆ **2023 – Christina Greeson MSN, CPNP-PC**

UNC Health Care, Graham, NC

PEDIATRIC FEEDING DISORDERS: A QUALITY IMPROVEMENT INITIATIVE TO IMPROVE DOCUMENTATION IN THE PSYCHOSOCIAL DOMAIN



Sharon Weston MS, RD, LDN



Nicole Misner MS, RD



Mary Gallotto RN, BSN, CPN



Christina Greeson MSN, CPNP-PC

**NASPGHAN Foundation/Abbott Nutrition
Advanced Fellowship Training in Pediatric Nutrition**

The NASPGHAN Foundation/Abbott Advanced Fellowship in Nutrition supports one year of advanced training in pediatric nutrition. The primary objective of the fellowship is to catalyze and increase the number of highly-trained, expert nutrition clinicians, educators and scientists among the membership of NASPGHAN, as a means to improve service to our patients and the public.

◆ **2022 – Sarah Saeed Abu-Alreesh MD**

Children’s Hospital of Philadelphia, Philadelphia, PA

MICROBIALLY-DERIVED VOLATILE METABOLITES IN PEDIATRIC NON-ALCOHOLIC FATTY LIVER DISEASE

◆ **2023 – Elaine Lin MD**

Hassenfeld Children’s Hospital at NYU Langone, New York, NY

USE OF AN IN-LINE DIGESTIVE CARTRIDGE IN SHORT BOWEL

Supported by an educational grant from Abbott.



Sarah Saeed Abu-Alreesh MD



Elaine Lin MD

**NASPGHAN Foundation
Advanced Fellowship Training in Pediatric Endoscopy**

The NASPGHAN Foundation Advanced Fellowship Training in Pediatric Endoscopy supports one year of advanced endoscopy training in the pediatric arena. The objective of the fellowship is to address the growing need for pediatric gastroenterologists who are skilled in advanced endoscopic procedures and provides a pathway for training of pediatric experts.

◆ **2022 – Diana Lerner MD**

Medical College of Wisconsin, Milwaukee, WI

EFFICACY AND SAFETY OF PROLONGED ESOPHAGEAL STENTING FOR REFRACTORY BENIGN ESOPHAGEAL STENOSIS

◆ **2023 – Alexander Coe MD**

Children’s Hospital of Philadelphia, Philadelphia, PA

USE OF EUS IN PEDIATRIC PERIANAL CROHN’S DISEASE AND PEDIATRIC EUS DATABASE

Supported by an educational grant from Olympus America, Inc.



Diana Lerner MD



Alexander Coe MD

SPECIAL RECOGNITION AWARDS

The NASPGHAN Foundation is fortunate to be the beneficiary of donations to acknowledge, honor, and commemorate special individuals' lives and work.

Gerard B. Odell Award

Dr. Odell, a professor of pediatrics at the Johns Hopkins School of Medicine, was a pediatric liver specialist. Later in his career, he established the pediatric gastroenterology division at the University of Wisconsin. He was a passionate scientist and his research on bilirubin metabolism and hepatobiliary disorders was a point of immense career pride. The award was developed to promote research and excellence in hepatology.

◆ 2022 – James Stevens MD

Emory University, Children's Healthcare of Atlanta Inc., Atlanta GA

A TRANSITION PROGRAM AND NOVEL JOINT PEDIATRIC-ADULT CLINIC MODEL DECREASES ADULT MORTALITY IN PEDIATRIC LIVER TRANSPLANT RECIPIENTS

◆ 2023 – Alexander Miethke MD

Cincinnati Children's Hospital Medical Center, Cincinnati, OH

EFFICACY AND SAFETY OF MARALIXIBAT IN PATIENTS WITH PROGRESSIVE FAMILIAL INTRAHEPATIC CHOLESTASIS (MARCH): A RANDOMIZED PLACEBO-CONTROLLED PHASE 3 STUDY

Amin Tjota Award for the Outstanding Abstract in Pancreatic Research

This award honors the memory of the late Dr. Amin Tjota and has been developed to promote the pursuit of research related to pancreatic disorders in children.

◆ 2022 – Cheng-Yu Tsai PhD

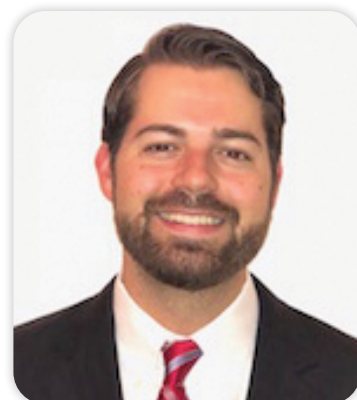
Stanford University, Stanford, CA

THE DOUBLE HIT OF ASPARAGINASE AND REDUCED DIETARY VITAMIN A PREDISPOSES LEUKEMIA PATIENTS TO PANCREATITIS

◆ 2023 – Michelle Saad MD

Cincinnati Children's Hospital Medical Center, Cincinnati, OH

FROM ACUTE PANCREATITIS TO DIABETES: RISK FACTORS AND TIMELINE ANALYSIS IN A PEDIATRIC POPULATION STUDY



James Stevens MD



Alexander Miethke MD



Cheng-Yu Tsai PhD



Michelle Saad MD

Richard J. Grand and John B. Watkins Research Prize for Excellence in Pediatric Gastroenterology, Hepatology and Nutrition

Drs. Grand and Watkins were pioneers in the field of pediatric gastroenterology and helped define our field as we know it today. Drs. Grand and Watkins worked together to build one of the earliest "full service" GI Divisions in the country. The award was developed to promote research and excellence in pediatric gastroenterology, hepatology and nutrition.

◆ 2022 – Matthew A. Buendia MD

Vanderbilt University Medical Center, Nashville, TN

GPX3 MAY REGULATE FIBROSIS IN EOSINOPHILIC ESOPHAGITIS THROUGH TGF- β SIGNALING

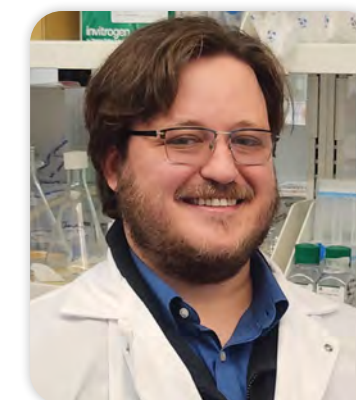
◆ 2023 – Daniel Goldenberg MD

Saint Louis University, Saint Louis, MO

MITIGATION OF TPN ASSOCIATED GUT AND LIVER INJURY IN SHORT BOWEL SYNDROME THROUGH RECIRCULATION OF DISTAL INTESTINAL CONTENTS BY A NOVEL SYSTEM



Matthew A. Buendia MD



Daniel Goldenberg MD

The William Balistreri Lectureship

The William Balistreri Lectureship supports a lecture featuring a research and clinical expert who presents cutting edge topics in the fields of gastroenterology, hepatology, nutrition, and pancreatic diseases. The William Balistreri lecture celebrates Dr. Balistreri's career-long commitment to excellence in clinical care, education, research and advocacy. The lecture is given during the Plenary Session at the Annual Meeting.

◆ 2022 – William F Balistreri MD, FAAP

Cincinnati Children's Hospital Medical Center, Cincinnati, OH

WILLIAM F BALISTRERI LECTURE: 50 YEARS: WHAT WAS HOT . . . WHAT WAS NOT!

◆ 2023 – Reshma Jaggi MD, DPhil

Emory School of Medicine, Atlanta, GA

PROMOTING EQUITY IN ACADEMIC MEDICINE: AN EVIDENCE-BASED APPROACH



William F Balistreri MD, FAAP



Reshma Jaggi MD, DPhil

Teri Li Award in Education

The Teri Li Award recognizes novel or extensive education efforts by junior faculty in NASPGHAN. The award is named in honor of Dr. B Li's spouse, Teri, who was passionately dedicated to quality education all of her life.

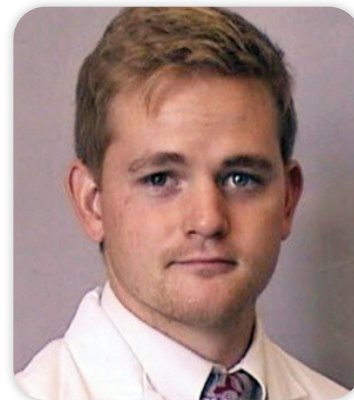
- ◆ **2022 – Brian McFerron MD**
Riley Hospital for Children, Indianapolis, IN
- ◆ **2023 – The Bowel Sounds Team / Temara Hajjat MBBS; Jennifer Lee MD; Peter Lu MD; Jason Silverman MD, MSc, FRCPC**



Brian McFerron MD



The Bowel Sounds Team



Benjamin Jack DO



Aravind Thavamani MBBS

The Cyclic Vomiting Syndrome Association (CVSA) Young Investigator Prize in Functional GI Disorders in honor of B Li

This award is given to a young investigator submitting an outstanding scientific abstract focusing on basic science, clinical investigation or outcomes research in the following conditions: Cyclic vomiting syndrome, aerophagia, rumination syndrome, functional dyspepsia, irritable bowel syndrome, or functional abdominal pain.

- ◆ **2022 – Benjamin Jack DO**
Walter Reed National Military Medical Center, Bethesda, MD
INCREASING TRENDS OF CANNABINOID HYPEREMESIS SYNDROME IN YOUTH:
THE GRASS IS NOT ALWAYS GREENER
- ◆ **2023 – Aravind Thavamani MBBS**
UH Rainbow Babies and Children's Hospital, Case Western Reserve University,
Cleveland, OH
FACTORS ASSOCIATED WITH PROLONGED HOSPITALIZATION IN CHILDREN AND
ADOLESCENTS WITH CYCLIC VOMITING SYNDROME



VOLUNTEERS



THANK YOU TO OUR 2022-23 VOLUNTEERS

Maisam Abu-El-Hajja MD, MS
Sari Acra MD
Bradley Barth MD
Hillary Bashaw MD
Rosara Bass MD
Vrinda Bhardwaj MD
Jessica Breton MD
Jefferson Naylor Brownell MD
Elizabeth Burch
Mirna Chehade MD
Rachel Chevalier MD
Austin Chiang MD
Eric Chiou MD
Bruno Chumpitazi MD
Thomas Ciecierrega MD
Stacey Collins MA, RDN
Ruben Colman MD
Mark Corkins MD
Catherine DeGeeter MD
Chinenye Dike MD
Michael Dolinger MD
Jennifer Dotson MD
Debora Duro MD
Dana Michelle Dykes MD
Matthew Edwards MD
Amy Feldman MD
Sara Fianza MD
Sarah Fleet MD
James Franciosi MD
Kendra Francis-Stream MD
A. Jay Freeman MD, MSc
Jaime Friedman MD
David Galloway MD
Melissa Donovan Gilbert PhD
Benjamin Gold MD
Nirmala Gonsalves MD
Kerri Gosselin MD
Michelle Gould MD
Alka Goyal MD
Amit Grover MD
Anthony Guerrero MD
Bhaskar Gurram MD
Temara Hajjat
Caroline Hall MD
Sanjiv Harpavat MD, PhD
Christoher Hayes MD
Keith Hazleton MD
Suzanna Hirsch MD
Christine Hoyer MS, RD
Bridget Hron MD
Jeannie Huang MD
Caylin Hughes MS, RD
Christine Waasdorp Hurtado MD
Samar Ibrahim MBChB
Genevra Janus MBA, RD
Chao Jarasvaraparn MD
M. Kyle Jensen MD, MS
Venus Kalami RD
Binita Kamath MBBChir
Sara Karjoo MD
Catherine Karls MS, RD

Wikrom Karnsakul MD
Saul Karpen MD, PhD
Vania Kasper MD
Mohit Kehar MD
Judith Kelsen MD
Basavaraj Kerur MD
Racha Khalaf MD
Ali Salar Khalili MD
Sivan Kinberg MD
Alex Koral MD
Amornluck Krasaelap MD
Jacob Kurowski MD
Joanne Lai MD
Olivia Lampone MS, RD
Ulises Leal MD
Christine Lee MD
Jennifer Lee MD
Alan Leichtner MD
Kristina Leinwand MD
Diana Lerner MD
Nicole Lidyand RDN, LD
Jenifer Lightdale MD
Quin Liu MD
Steven Liu MD
Kathleen Loomes MD
Peter Lu MD
Abigail Lundin RD, MS
Asim Maqbool MD
Mercedes Martinez MD
Nancy Matthiessen MAS, RD
Alisha Mavis MD
Brian McFerron MD
Maireade McSweeney MD
Khyati Mehta MD
Cortney Menchini MD
Ethan Mezzoff MD
Hilary Michel MD
Steven Miller MD
Saeed Mohammad MD, MS
Jerome Molleston MD
Iona Monteiro MD
Joesph Moore RD
Hayat Mousa MD
Vincent Mukkada MD
Kay Mullin RDN
Melissa Musser MD
Mayumi Nakamura MPH, RD
Shweta Namjoshi MD
Fernando Navarro MD
Deborah Neigut MD
Joanna (Barbara) Niklinska-Schirtz MD
Inna Novak MD
Jodie Ouahed MD
Nadia Ovchinsky MD
Nikhil Pai MD
Brad Pasternak MD
Raza Ali Patel MD
Scott Pentiuik MD
Maria Perez DO
Uma Padhye Phatak MD
John Pohl MD

Alda Prendaj MD
Ana Isabel Quesada Tortoriello MD
Vikram Raghu MD
Bonney Reed MD
Patrick Reeves MD
Norberto Rodriguez-Baez MD
Isabel Rojas MD
Rachel Rosen MD
John Rosen MD
Bryan Rudolph MD
Ramy Sabe MD
Shehzad Saeed MD
Kelly Sandberg MD, MSc
Rinarani Sanghavi MD
Senthilkumar Sankararaman MD
Cary Sauer MD, MSc
Daphne Say MD
Jarrad Scarlett MD
Jeremy Screws MD
Timothy Sentongo MD
Abdul Shahein MD
Jennifer Smith MD
Jason Silverman MD, MSc
Scott Snapper MD
Samir Softic MD
Brennan Spiegel MD
Nancy Spinner PhD
Arvind Srinath MD, MS
Marisa Stahl MD
Lauren Storch MS, RD
Jennifer Strople MD
Shova Subedi MD
Shikha Sundaram MD
Sana Syed MD
Erin Syverson MD
Carmyn Thompson MD
Mike Thomson MD
Naomi Tjaden MD
Paul Tran MD
Jordan Trotter-Busing MD
Anna Tuttle MS, RD
Charles P.B. Vanderpool MD
Megan Van Hoorn MS, RD
Miranda van Tilburg PhD
Sujithra Velayuthan MD
Rajitha Venkatesh MD
Preeti Viswanathan MD
Jennifer Vittorio MD
Catharine Walsh MD, PhD
Joshua Wechsler MD
Barry Wershil MD
Sharon Weston MS, RD
Brock Williams MD
Rebecca Winderman MD
Michael Wilsey MD
Jennifer Woo Baidal MD
Ann Ming Yeh MD
Dean Yimlamai MD
Mary Zachos MD
Hengqi (Betty) Zheng MD
Wenjing Zong MD



DONATIONS

Your donation through the NASPGHAN Foundation will support the professional and patient education and research mission of NASPGHAN. Your support will enable the Foundation to fund research which will provide insights into diagnosis and treatment of pediatric digestive disorders. Public awareness campaigns provide education and information for children and adolescents affected by digestive and nutritional disorders.



◆ **Donate by Mail:**

NASPGHAN FOUNDATION
714 N. BETHLEHEM PIKE / SUITE 300
AMBLER, PA 19002

(Please let us know if the donation is in honor of anyone and where acknowledgement should be sent.)

◆ **Donate on Line:** ➔

◆ **Donate by Cell:** The NASPGHAN Foundation has an easy way to make donations via your cell phone. Just text **4GIPEDS** to **215-608-5488**. A donation link will come up that will allow you to make your donation both quickly and securely.

ENDOWMENT OPPORTUNITIES

◆ **Richard J. Grand and John B. Watkins Research Prize for Excellence in Pediatric Gastroenterology, Hepatology and Nutrition**

Drs. Grand and Watkins worked together to build one of the earliest “full service” GI Divisions in the country. They have been extensively involved in the formative days of NASPGHAN, are both past Presidents of the Society, and both are recipients of the Shwachman Award. It is in the spirit of the work they did together, that this Legacy Award will bear both their names. This award recognizes outstanding achievement in our field to be bestowed at the Annual NASPGHAN Meeting.

◆ **The William F. Balistreri, MD Prize for Excellence in Pediatric Gastroenterology, Hepatology and Nutrition**

In honor of his extraordinary devotion to pediatric gastroenterology, hepatology, nutrition, and to NASPGHAN, the William F. Balistreri, MD Prize for Excellence in Pediatric Gastroenterology, Hepatology and Nutrition endows an outstanding speaker at our Annual Meeting.

◆ **The James Heubi Timeline Fund**

In 2019, way before any of us could imagine a global shut down or his own untimely and far too early loss — Dr. Heubi envisioned and started work on a “living” timeline on the NASPGHAN website with digital, written and video materials. It is therefore in his honor that NASPGHAN proudly established the Jim Heubi Memorial NASPGHAN Timeline Fund — to support a digest of significant historical events of NASPGHAN over the past half century that is — just as Jim envisioned — a living document that will expand in content as the history of NASPGHAN continues to unfold and our society continues to flourish in future years. Contributions to this fund will ensure that this work is both enduring and endearing.

◆ Teri Li Award in Education

This award recognizes novel and/or extensive educational efforts in pediatric GI for a junior faculty (within 10 years of fellowship). As a Montessori teacher, Teri's lifelong passion was education.

The clinician-educator pathway is currently the most commonly chosen career track amongst GI fellows and junior faculty. There are currently no recognition awards to support novel or extensive efforts in pediatric GI education. By providing recognition, such an award could help further a young faculty member's career as a clinician-educator.

THE NASPGHAN LEGACY SOCIETY

The NASPGHAN Legacy Society is open to all individuals who have named NASPGHAN in their long-term plans or created an endowment for our benefit. As a member of the Society, you will be recognized at the Annual Meeting now and in the future for your contribution to the stability and growth of NASPGHAN. You will receive yearly invitations to the VIP Donor Reception at the national meeting and be identified by a special designation on your meeting badge. Whether your contribution is given with a directed purpose (determined by the donor) or provided to create an endowment intended for new initiatives and activities, it will receive yearly acknowledgement. Thus, by becoming a member of the Society, you will forever be recognized as a champion of your society and profession.

◆ How it Works

- ▶ The NASPGHAN Foundation is the fund-raising partner of NASPGHAN, so your gift should be directed to the Foundation.
- ▶ Name the NASPGHAN Foundation in your will, codicil to your will, living trust or as a beneficiary of your retirement plan, life insurance policy or donor-advised fund.
- ▶ Designate your gift for a particular purpose that is important to you, assign it to the legacy endowment, or allow us to use the gift where the need is greatest at the time it matures. In any case, you immediately become a member of the NASPGHAN Legacy Society.
- ▶ Indicate a set amount, a percentage or the remaining balance to benefit our mission.



NASPGHAN FOUNDATION MEMBER DONATIONS (as of August 15, 2023)

Champion (\$1,000 and up)

APGNN
Jane Balint, MD
John A. Barnard MD
Valeria Cohran MD
Raye-Ann O. De Regnier MD
Carlo Di Lorenzo MD
Benjamin D. Gold MD
Janet K. Harnsberger MD
Susan J. Henning PhD
Melvin B. Heyman MD
Abraham Jelin MD
Rohit Kohli MD
Jenifer R. Lightdale MD, MPH
Sarah Long MD
Mark E. Lowe MD, PhD
Andrew Mulberg MD
Kevin O'Meara MD
David A. Piccoli MD
Jyoti Ramakrishna MD
Shehzad A. Saeed MD
Ann O. Scheimann MD, MBA
Philip M. Sherman MD, FRCPC
James Squires MD, MS
Robin Steinhorn
Aliye Uc MD
Menno Verhave MD
Barry K. Wershil MD
Harland S. Winter MD
Melawati Yuwono, MD

Benefactor (\$500-\$999)

Jeremy Adler, MD, MSc
Warren P. Bishop MD
Dennis D. Black MD
Mitchell B. Cohen MD
Joseph M. Croffie MD
George D. Ferry MD
Kara Gross Margolis MD
Margo Heubi
Jeannie Huang MD, MPH
Alan Jobe MD
Nicola L. Jones MD, PhD
Saul Karpen MD, PhD
Alan M. Leichtner MD, FAAP, MS-HPed
Quin Liu MD
Kathleen M. Loomes MD
Petar Mamula MD
Mercedes Martinez MD
Dedrick Moulton, MD
Vicky Lee Ng MD, FRCPC
Robert Adam Noel MD
Maria M. Oliva-Hemker MD

D. Brent T. Polk MD
Edgardo David Rivera-Rivera MD
John Rosen MD
Ronald J. Sokol MD
Margaret K. Stallings

Partner (\$200-\$499)

Zeyad Abdulkader MD
Estella M. Alonso MD
Amal Aqul MD
Karla Au Yeung MD
Christina B. Bales MD
Lee Bass MD
Millie Boettcher MSN, CRNP, CNSN
Kristin Stanley Bramlage MD
Jefferson Naylor Brownell MD
Carolyn Sullivan Burklow MD
Nick CaJacob MD
Stanley A. Cohen MD
Stephen Daniels MD, PhD
Nirav K. Desai MD
Jennifer Dotson MD, MPH
Debora Duro MD, MS
Looi Ee MBBS, PhD
Michael K. Farrell MD
Alejandro Flores MD
Glenn T. Furuta MD
David Galloway MD
Van S. Hubbard MD, PhD
Judith Kelsen MD
Sandra Chihyun Kim MD
Donald Wayne Laney, Jr. MD
Joseph Levy MD
Larry Glen Lewis MD
Daniel Mallon MD
Randolph M. McConnie MD
Marjorie Frost McCracken MD
Iona M. Monteiro MD
Jonathan Moses MD
William S. Mow MD
Mark Naddaf MD
Molly O'Gorman-Picot MD
Anthony Otley MD
James Padbury
Susan Peck CRNP
Massimo Pettoello-Mantovani MD
Simon Rabinowitz MD
Michael J. Rosen MD
Adrienne Scheich MD
Steven M. Schwarz MD
Timothy A. Sentongo MD
Justine Turner MBBS, PhD
Kevin Watson MD
Anne A. Wolf MD
Fernando Zapata MD

Associate (\$100-\$199)

Sabina Ali MD
Ana Catalina Arce Clachar MD
Eric Benchimol MD
Elana M. Bern MD, MPH
Lynelle Boamah MD, MEd
Athos Bousvaros MD, MPH
Brendan M. Boyle MD
Jeffrey B. Brown MD
Noreen Chambers MD
Aline Charabaty MD
Harold A. Conrad MD
Robert Dahms
Justin De Boer MD
David E. DeVoid MD
Joan S. DiPalma MD
Jason Dranove MD
Christopher Duggan MD, MPH
Karan McBride Emerick MD, MSCI
Jeffrey C. Fahl MD
Peter R. Farrell MD, MS
Drew Feranchak MD
Paul Fisher MD
Victor L. Fox MD
Irene Gamra MD
Kerri Gosselin MD
Amit Grover MD
Colleen M. Hadigan MD, MPH
Michael A. Haight MD
Rula Harb MD
Robert O. Heuckeroth MD, PhD
Leslie M. Higuchi MD
Jordan Hupert MD
Sohail Husain MD
Esther Israel MD
Robert M. Issenman MD
M. Raphaelle Jean MD
Stacy A. Kahn MD
Daniel Kamin MD
Marsha Kay MD
Samuel Kocoshis MD
Michael Konikoff MD
Benjamin R. Kuhn MD
Christine K. Lee MD
Jessica Lee MD
Ian H. Leibowitz MD
Steven N. Lichtman MD
Otto Louis-Jacques MD
Wieslaw Machnowski MD
Eric S. Maller MD
Michael Manfredi MD
An Massaro MD
Elizabeth Mileti DO
Elaina Modlin MD
Sean Moore MD, MS

Shweta Namjoshi MD
Deborah A. Neigut MD
Samuel Nurko MD
Bankole Osuntokun MD
Joseph Palermo MD, PhD
John Pohl MD
Richard Polin MD
Norberto Rodriguez-Baez MD
Robert J. Rothbaum MD
David A. Rudnick MD, PhD
Elizabeth Schaefer MD
Kathleen B. Schwarz MD
Thomas J. Sferra MD
Darla R. Shores MD
Mitchell D. Shub MD
Jason Silverman MD
Jocelyn Silvester MD
Manu Raj Sood MD
Lawrence F. Sorkin MD
Francisco Sylvester MD
Philip Toltzis MD
Gitit Tomer MD
Patrika Montricul Tsai MD
David N. Tuchman MD
Charles Vanderpool MD
Frederick Watanabe MD
Toba Weinstein MD
Tom and Chris Welch
Robert Wilmott MD
Michael J. Wilsey, Jr MD
Michele Winesett MD
Clyde Wright MD
Stavra Xanthakos MD
Nancy U. Yokois MD
Mary Zachos MD
Hengqi (Betty) Zheng MD

**Friend
(\$5-\$99)**

Adel Abi-Hanna MD
Imad Absah MD
Sarah Abu-Alreesh MBBS
Sarika Aggarwal MD
Phyllis F. Agran MD, MPH
Cynthia Akagbosu MD
Eman Al Atrash MD
Nour Al Saati MD
Bashar Alaswad MD
Lindsey Albenberg MD
George Alex MD
Chandran Paul Alexander MBBS,DCH,
MD
Anushree Moh Algotar MD
Syed Shaukat Ali MD
Razan Alkhouri MD
Nikki Allmendinger MD
Osama Almadhoun MD
Elizabeth Alonso-Rubiano MD
Khoula Julenda Al-Said MD, FAAP,
FRPCPC
Fernando Alvarez MD

Rathna P. Amarnath MD
Nadia Ameen MD
Anthony Anani MD, MPH, MBA MD
Janaina Nogueira Anderson MD
Joel M. Andres MD
Swati Antala MD
Keren Appel MD
Ricardo Arbizu MD, MS
Ronen Arnon MD
Sayuri I. Asano DCN, MPH
Farhat N. Ashai-Khan MD
Dhandapani Ashok MD
Scheherzade Aslam MBBS, MD,
FRPCPC
Orhan Atay MD
Ahmet Aybar MD
Corey Baker MD
Robert D. Baker MD
Katherine Baldwin MD
Cortney Ballengee Menchin MD
Michelle Bao MD
Collin Barker MD
Howard Baron MD
Nicole Baron MS, CPNP
Mark Bartlett MD
Keisha Barton MD
Anam Bashir MBBS
Sindhura Batchu MD
Beate Beinvoigl MD
Stuart Berezin MD
Sarah Bergstrom APRN
Jorge A. Bezerra MD
Vrinda Bhardwaj MD
Sangeeta Bhargava MD
Natalie Bhesania MD
Patricia Bierly CRNP
Samra S. Blanchard MD
Georgina Bojczuk BS, RD CSP
Hassan Bokaie MD
Marilu Bolivar-Quifones MD
Esteban L. Bonfante MD
Silvana Bonilla MD
Kimberly Braly RD, LD
Holly Breeden MD
Keith Breglio MD
Catherine Brigman MD
Annemarie Broderick MD
Molly Brogdon APRN
David Brumbaugh MD
Andrew Buckley MD
Gloria Buentello MD
Malgorzata (Maggie) Bujarska MD
Elizabeth S. Burch MSN, RN, CPNP
Tyler Burpee MD
Glendon C. Burress MD
Jessica M. Buzenski PhD
Yasemin Cagil MD
Russell Cameron MD
Kimberly Campbell MD
Rheu C. Candava MD
Alexandra Carey MD
Joshua Carroll MD

Teresa R. Carroll MSN, RN, APRN
Leonel Gudemaro Castañon Fuentes
MD
Julie Castilloux MD
Anira Lizbeth Castro Zárate MD
Carolina Cerezo MD
Denis Chang MD
Gisela G. Chelimsky MD
Yen-Ping Chen MD
Rebecca Cherry MD
Kimberley A. Chien MD
Daniela Chino Valderrabano MD
Ashish Chogle MD
Sarah Choi MD, MPH
Shelly Chatterjee Choudhury MD
Ankur Chugh MD
Bruno Chumpitazi MD
Thomas Cicierega MD
Shannon Cifra MD
Maria I. Clavell-Young MD
Donna G. Clement MD
Maridine Co MD
José Cocjin MD
Leslie Coda RN, PNP
Conrad Cole MD, MPH, MSc
Christine Collymore RD, LD, CSP, CNSC
Ruben Colman MD
Lucille Cooke BS, RD, CSP
Mindie Corpus-Navarro MD
Guillermo Alejandro Costaguta MD
Maya Cox MSN
Addison Cuneo MD
Caitlin Cutler MD
Ghaida Dahlwi MD
Anil Darbari MD, MBA
Renee Dhar Dass MD
Rhys David MSN
Judy Jean Davis MD
Sheryl Palomo De Leon-Dial MD
Arthur J. de Lorimier MD
Vera De Matos Maillard MD
Edwin de Zoeten MD
Amy R. DeFelice MD
J Fernando del Rosario MD
Leena Desai MSc, MD
Jasbir Dhaliwal MD
Rajmohan Dharmaraj MD
Rosalyn Diaz MD
Jenna Diaz MD
Molly C. Dienhart MD
Reed Dimmitt MD
Sylvia Doan MD
Amy Donegan RN, MS, APN
Sesi Dosunmu-Ogunbi MD
Ruth A. Duffield MSN
Glenn Zu-Hong Duh MD
Daniel Duncan MD
David Dunkin MD
Sydney Dupuis MD
Michael Duyzend MD
Dana Michelle Dykes MD
Jaime Echarte MD

Matthew Edwards RD, CD, CDCES
Matthew D. Egberg MD, MPH MMSc
Udeme D. Ekong MD, MPH
Mohammad F. El-Baba MD
Erin Elbel Mauney MD
Sofia Elizondo Benet MD
Jason Mark Ellison MD
Foglio Elsie Jazmin MD
Valentine Enemu MD
Katharine Eng MD
April Escobar MS, RD, CSP, LD
John K. Eshun MD
Yamen Ezaizi MD
Tolulope Falaiye MD
Sabeena Farhath MD
Peter Farmer MD
Alessio Fasano MD
Christophe Faure MD
Lina Maria Felipez MD
William Ferguson MD
Marianelly Fernandez Ferrer MD
Danielle Ferraguti MD
Mary Beth Feuling MS, RD, CSP, CD
Laurie N. Fishman MD
Leslie Fitzharris MSN
Mary Flanagan MD, BCh, BAO
Thomas Flass MD
Jose Luis Flores MD
Suzanne M. Fortuna DNP, APRN
James Franciosi MD, MS
Mary Pat Francisco MD
Diana Laura Franco Gutiérrez MD
Joel Friedlander DO, MA
Judy Fuentebella MD
Elena Fuentes-Afflick MD
Aayush Gabrani MBBS
Zeenat Gaibee MD
Mary Gallotto RN, BSN, CPN
Jayshree Ganatra MD
Reinaldo Garcia MD
Mary Abigail Garcia MD
Carmen Alicia Garcia Molina MD
Montserrat García-Barrón MD
Christy N. Gardner MS, RD, LD/N
Cheryl Garipey MD
Donna Garner MD
Jose Garza MD
Grace Gathungu MD
Jared Gelbs MD
Daniel Gelfond MD
Marilyn G. Geller MD
Donald E. George MD
Matthew Giefer MD
Joanna Gies RD
Stacey Nicholle Gillespie MD
Laura Ginsberg DO
Arieda Gjikopulli MD
Elizabeth E. Gleghorn MD
Nina Gluchowski MD
Monique Goldschmidt MD
Arturo Adrián Gómez Rodríguez MD
Roberto A. Gomez-Suarez MD

Tanja Gonska MD
Ruben Gonzalez-Vallina MD
Elliott Gordon MD, MSc
Andrea Gosalvez Tejada MD
Aakash Goyal MD
Alka Goyal MD
David A. Gremse MD
Jennifer Griffin MD
John (Matt) Grisham MD
Andrew Grossman MD
Kelly Grzywacz MD
Anthony Guerrero MD, PhD
Amy Guido
Miriam Guillen-Guerrero MD
Daniela Guisado MD
Reema Gulati MD
Sandeep K. Gupta MD
Rishi Gupta MD
Shivani Gupta DO
Hadeel Haddad MD
Molissa Hager MD
Michael S. Halata MD
Caroline Hall MD, PhD
Eyad Hanna MD, MME
Michael H. Hart MD
Lana N. Hattar MD
Kathryn E. Hawa MD
Leo A. Heitlinger MD
Solange Heller Rouassant MD
Jennifer Hellmann MD
Hector M. Hernandez MD
Elsie Higuera Espinoza MD
Amber Hildreth MD
Samantha Hill MD
Barry Hirsch MD
Suzanna Hirsch MD
Barb Hisey BSN
Meredith Hitch MD
Betsy Hjelmgren MS, RDN, CSP, LDN
Candace Hochstrasser MSN, FNP-BC
Edward Hoffenberg MD
Natalie Hoffmann MD
Susan B. Holecz MSN, CPNP
Kathleen Joan Holland MD
Puanani Hopson MD
Karoly Horvath MD, PhD
Brett Hoskins MD
Mohammad Hussein MD
Samar Ibrahim MBChB
Joseph Ignacio MD
Aamer Imdad MBBS
Teri Jackson MSN, APRN
Suzette Jacobs MSN, RN, CPN
Belinda James-Petersen RN, PNP, DNP
Chaowapong Jarasvaraparn MD
Amir Jazayeri MD, MBA
Heather L. Jenkins-Rosales
Melissa Jensen MD
Hilary Jericho MD
Lissette Jimenez MD
Helen A. John-Kelly MD
Eleonor April Jones RN, MSN, CPNP

Brittany Joseph MS, RD, LDN
Jacqueline Jossen MD
Abha Kaistha MD
Binita Kamath MD, MBBSChir, MRCP
Jess Kaplan MD
Lina Karam MD
Wikrom Karnsakul MD
Nagraj Kasi MD
Vania Kasper MD
Seiichi Kato MD, PhD
Aubrey J. Katz MD
Ajay Kaul MBBS, MD
Panamdeep Kaur MD
Richard Kellermayer MD
Janice A. Kelly Dones MD
Drew Kelts MD
Melissa Kennedy MSN, NP
Elizabeth Kennedy MD
Nanda Kerkar MD
Anil Kesavan MD
Bradley Kessler MD
Seema Khan MD
Denise M. Kilway DNP, APNP
Dale King MD
Kristi King MPH, RDN, CNSC
Barbara S. Kirschner MD
Gregory Kobak MD
Teresa Kodiak APRN
Soula Koniaris MD
Alexander Koral MD
Simone Kortbeek MD
Katja Kovacic MD
Karlo Kovacic MD
Susan Kovacs MD
Nancy Krebs MD
Tania Kriegler MSN, NP
Arthur Kringsman MD
Amethyst C. Kurbegov MD
Amy Kuzmich MD
Vanessa Laffert MD
Joanne Lai MD
James Lamphear MD, PhD
Misa Lawson RD, CDE, MPH
Frances Lee MD
Jennifer Lee MD
Karen Leibowitz MD
Nuphar Lendner MD
Mike Anthony Leonis MD
Diana Greyz Lerner MD
Melissa Leyva MD
Ding-You Li MD, PhD
Ellen Lide Mitchell MD
Nicole Lidyard RD, LDN
Henry Lin MD
Tom K. Lin MD, MBA
Simon C. Ling MD
Archana Lingannan MD
Edwin Liu MD
Steven Liu MD
Kenneth A. Lombard MD
Oscar Loret De Mola MD
Beth Loveridge-Lenza MD

Mary Allyson Lowry MD
 Tony Lulgjuraj MD
 Sarah Lusman MD
 William C. MacLean, Jr MD
 Michele Maddux MD
 Safwan Malas MD
 Stanton Malowitz MD
 Jyoti Mani MD
 Sherief Mansi MD
 Ishrat Mansuri MD
 Valerie Marchand MD
 Seth Marcus MD, MSc
 Barbara Marinaccio MD
 James F. Markowitz MD
 Jonathan E. Markowitz MD
 Goldie Markowitz RN, PNP
 Andrea Martinez MD
 George Marx MD
 Nancy Matthiessen MAS, RD
 Randall D. McClellan MD
 Janine McDermott MSN
 Colston McEvoy MD
 Yvonne B. McFarlane-Ferreira MD
 Andrea McInerny MD
 Meredith McIntee APN
 Craig McKinney MD
 Colleen McNatt CPNP
 Maireade McSweeney MD
 Suzan K. McVay RN
 Tegan J. Medico MS, MPH, RDN, CNSC
 Fernando R. Medina Carbonell MD
 Khyati Mehta MD
 Megha Mehta MD
 Pooja Mehta MD
 Liliana Melendez MSN, FNP-C
 Calies Menard-Katcher MD
 Ali Mencin MD
 Michael V. Mendoza MD
 Melanie Merrill-Kennedy BS, PA-C
 Russell J. Merritt MD, PhD
 Jamie Merves MD
 Joy S. Meyer DTR
 Adam G. Mezzoff MD, CPE
 Jeremy Middleton MD
 Alexander Miethke MD
 Jonathan Miller MD
 Mar Miserachs MD
 Douglas B. Mogul MD
 Aimee Molineaux RD, LD/N CNSC
 Zarela Molle-Rios MD
 Jerome Molleston MD, PhD
 Alfredo E. Mora-Guevara MD
 Carmen Moyers RD, CSP, LD
 Amanda Muir MD
 Linda Muir MD
 Aleixo Muise MD
 Katherine G. Mullin RDN, LD, CDE
 Pramodha Muniyappa MD
 Karen F. Murray MD
 Sarah R. Myers BSN, RN, CPND
 Mayumi Nakamura MPH, RD, CSP, CNSC
 Apoorva Nanagiri MD

Prathiba Nanjundiah MD
 Debrah A. Nash BSN, RN
 Amana Nasir MD
 Alexander Nasr MD
 Radha Nathan MD
 Suzanne Nelson MD
 Noor Nema MD
 Kimberly Paige Newton MD
 Huyen Nguyen DO
 Kaylie Nguyen MD
 Simone Nicol MD
 Dieudonne Nonga MD
 Inna Novak MD
 Patricia Novak MPH, RD
 Colleen Ann Nugent MD
 Cade Nylund MD
 Melanie Oates RN-BSN
 Alicia Olave-Pichon MD, MPH
 Nick Ogunmola, MD, FACG
 Sarah Orkin MD
 Amador Ortega Hernández MD
 Kim Osborne DNP, RN, CPNP
 Joseph Palermo MD
 Pablo Palomo MD, PhD
 Debra Pan MD
 Kristine Pascuma CPNP
 Dinesh S. Pashankar MD
 Tiffany J. Patton MD
 Dana Patton-Ku MD
 Luc Pelletier MD
 José De Jesús Peña Gutiérrez MD
 Scott Pentiuk MD
 Maria Perez MD
 Emily Rothbaum Perito MD, MAS
 Julia Perkins RN, CPNP
 Anna Peters MD
 Thu Pham DO
 Uma Phatak MD
 Michael Pickens DO
 Joseph Picoraro MD
 Rebecca Pipkorn RD, CNSC
 Ryan Pitman MD
 Randi G. Pleskow MD
 Birgitta Polson MSN
 Paula Milena Prieto Jimenez MD
 Philip E. Putnam MD
 Ana Isabel Quesada Tortoriello MD
 Shervin Rabizadeh MD
 Vikram K. Raghu MD, MS
 Teresa Yared Ramos Leal MD
 Sujal Rangwalla DO
 Rebecca C. Ratcliff RN, PNP
 Elyanne Ratcliffe MD
 Natalie Reitzel MBBS
 Sue J. Rhee MD
 J Marc Rhoads MD
 LaQuatre Rhodes MD
 Amanda Ricciuto MD
 Tanisha R. Richards MSN, NP
 Lisa M. Richardson MS, RD
 Mirta Rios RD, CSP, LDN
 Sara Waller Rippel MD

Syed Ahsan Rizvi MD
 Marian Roan MPH, RD, CSP, CNSC
 Juan Eduardo Robles Aguilera MD
 Jacob Robson MD
 Kelly Rodriguez PhD
 Philip L. Rogers MD
 Isabel Rojas MD
 Diana Karely Rojas Valenzuela MD
 Angeles Rojo Rosales MD
 Annemarie Rompca MD
 Rachel Rooke MSN APRN
 Jorge A. Rosario-Mulinelli MD
 Karen Rosas-García MD
 Melissa Rose MD
 Jeffrey Rosensweig MD
 Philip Rosenthal MD
 Joel R. Rosh MD
 Albert Marshall Ross, IV MD
 Matthew Royall MD
 Bryan Rudolph MD, MPH
 Paul Rufo MD, MMSc
 Rachel Ruiz MD
 Joseph Runde MD
 Brittany C. Rundell MD
 Leigh Runyan MD
 Tracy Ruvolo MS, MBA, RD
 Nasim Sabery Khavari MD
 Liane Sadler MD
 José Angel Salas-García MD
 Zeina Saleh MD
 Caroline Salozzo MBA, RDN, CNSC
 Gloria Samano-Villanueva MD
 William San Pablo MD
 Richard H. Sandler MD
 Neha R. Santucci MD
 Meghana Sathe MD
 Jarrad Scarlett MD, PhD
 Rebecca Scherr MD, MPH
 Annette Schille MS, RD, LD
 Michael Schmalz MD, MPH
 Diana Schnee MS, RD, CSP, LD
 Richard A. Schreiber MD
 Shauna Schroeder MD
 Sally Schwartz RD, CSP, LDN
 Jeffrey B. Schwimmer MD
 Gaith Semrin MD
 Aruna Sethuraman MBBS
 Ameesh A. Shah MD
 Praful C. Shah MD
 Meera Shah MD, MPH
 Victoria Shakhin MD
 Valentina Shakhnovich MD
 Maryam Shambayati DO
 Melissa Shapiro MD
 Lisa Sharda MA, RD, ILBLC
 Ruchika Sharma MD
 Harohalli Shashidhar MD
 Georgianna R. Shea MD
 Vivek Shenoy MD
 Mary Sherlock MD
 Anita Rowhani Sicolo MD
 Anees Siddiqui MD

Leah Siebold MD
 Kimberly Silva MD
 Jared Silverstein MD
 Scott M. Sirlin MD
 Mamata Sivagnanam MD
 Cass Smith MD
 Erika Snow-Holt MD, MPH
 Toni Solari RD, LDN
 Aliza Solomon MD
 Dennis Spencer MD
 Judy B. Splawski MD
 Inbar Spofford MD
 Raman Sreedharan MD
 Or Steg Saban MD
 Barry A. Steinmetz MD
 Jacklyn Stellway PsyD
 John Stephens MD
 Linda Stephenson-Somers MD
 Jessica Stumphy MD
 Frederick J. Suchy MD
 Kara Sullivan MD
 Shikha Sundaram MD
 Yojana Sunkoj MD
 Anandini Suri MD
 Thomas Sutton MD
 Supraja Swamy MD
 Heidi Sweeney MSN, APRN
 Michael Sweetman MD
 Flora Szabo MD
 Kevin Sztam MD, MPH
 Allison Ta MD, MS
 Phillip I. Tarr MD
 Kaliyann Te MS, PA
 Mila Tempel MD
 John F. Thompson MD
 Henry R. Thompson MD
 Eric Tibesar MD
 Stefani Tica MD
 Michelle Tobin MD
 Kevin Tomlinson MS, RD, CNSC
 Clarivet Torres MD
 Kimberly Trieschmann MD
 Nicole Triggs MSN, APRN, CPNP-PC
 Amy Tsai MD
 Jeanne Tung MD
 John Tung MBBS, MRCP
 Angela M. Turner RN
 Danielle Usatin MD
 Laura E. Vargo MSN, APRN, FNP
 Raghu Varier MD
 Srisindu Vellanki MD
 Emily Ventura BSN, RN
 Sarah Vermilyea MS, RD, CSP, LD, CNS
 Salvador Villalpando-Carrion MD, MsC
 Saurman Virginia MD
 Nguyen Vivian An MD
 Diana Volpert MD
 Miriam B. Voss MD
 Padade M. Vue MD
 Christine E. Waasdorp Hurtado MD
 Emmala Ryan Waduge RN, NP
 Scott Wagoner PhD

Ghassan Wahbeh MD
 Kirsten Walaski MSN
 Ritu Walia MD
 Thomas Walters MD
 Hongtao (Alex) Wang MD
 Viraine Weerasooriya MD
 Melissa Weidner MD
 Vanessa Weisbrod BA, CA
 Sharon Weston MS, RD, LDN
 Jordan S. Whatley MD
 David Willcutts MD
 Dana I. Williams MD
 Melba Williams, PNP
 Peter Wilmot DO
 Claire Witmer MD
 Jodi Wolff MS, RDN, FAND, FAACP
 Lauren Wolverton MD
 Steven Shi-fong Wu MD
 Anne Wuerth MS, RN, CPNP
 Desale Yacob MD
 Michael R. Yaffe MD
 Narendra Yallanki MD
 George Yanni MD
 Nada Yazigi MD
 Chunyue Yin PhD
 Wahaj Zaidi MD
 Sebastian Zavoian MD
 Maysa Zayat MD
 Jason (Yanjia) Zhang MD, PhD
 YoYo Zhang MD
 Yuhua Zheng MD
 Lori Zimmerman MD

William Balistreri Fund

Estella M. Alonso MD
 Joel M. Andres MD
 Ana Catalina Arce Clachar MD
 Christina B. Bales MD
 Lee Bass MD
 Dennis D. Black MD
 Lynelle Boamah MD, MEd
 Carolyn Sullivan Burklow MD
 Mitchell B. Cohen MD
 Valeria Cohran MD
 Joseph M. Croffie MD
 Stephen Daniels
 Raye-Ann O. De Regnier
 David E. DeVoid MD
 Jason Dranove MD
 Christophe Duggan MD, MPH
 Michael Duyzend
 Looi Ee MBBS, PhD
 William Ferguson
 Paul Fisher
 Elena Fuentes-Afflick
 David Galloway MD
 Irene Gamra MD
 Michael A. Haight MD, MHA
 Melvin B. Heyman MD, MPH
 Samantha Hill MD
 Jordan Hupert MD

Alan Jobe MD
 Binita Kamath MD, MBBSChir, MRCP
 Ajay Kaul MBBS MD
 Marsha Kay MD, FAAP, FASGE
 Judith Kelsen MD
 Samuel Kocoshis MD, FAAP
 Michael Konikoff MD
 Benjamin R. Kuhn DO
 Donald Wayne Laney, Jr. MD
 Larry Glen Lewis MD
 Steven N. Lichtman MD
 Jenifer R. Lightdale MD, MPH
 Otto Louis-Jacques MD
 Wieslaw Machnowski MD
 Daniel Mallon MD
 An Massaro MD
 Randolph M. McConnie MD
 Marjorie Frost McCracken MD, PhD
 Douglas B. Mogul MD
 Sean Moore MD, MS
 William S. Mow MD
 Sarah R. Myers BSN, RN, CPNP
 Mark Naddaf MD
 Deborah A. Neigut MD
 Molly O’Gorman-Picot MD
 Maria M. Oliva-Hemker MD
 James Padbury
 Massimo Pettoello-Mantovani
 Richard Polin
 Simon Rabinowitz MD, PhD
 Kathleen B. Schwarz MD
 Philip M. Sherman MD, FRCPC, FAAP
 Mitchell D. Shub MD
 Ronald J. Sokol MD
 James Squires MD, MS
 Robin Steinhorn
 Francisco Sylvester MD
 Philip Toltzis
 Menno Verhave MD
 Frederick Watanabe
 Tom and Chris Welch
 Robert Wilmott MD
 Michael J. Wilsey, Jr MD, FAAP
 Michele Winesett MD
 Clyde Wright MD
 Nada Yazigi MD
 Fernando Zapata MD

Grand Watkins Fund

Amal Aqul MD
 Christina B. Bales MD
 Lee Bass MD
 Elana M. Bern MD, MPH
 Dennis D. Black MD
 Athos Bousvaros MD, MPH
 Mitchell B. Cohen MD
 Nirav K. Desai MD
 Alejandro Flores MD
 Victor L. Fox MD
 Glenn T. Furuta MD
 Irene Gamra MD

Kerri Gosselin MD
 Colleen M. Hadigan MD, MPH
 Robert O. Heuckeroth MD, PhD
 Melvin B. Heyman, MD
 Leslie M. Higuchi MD
 Van S. Hubbard MD, PhD
 Stacy A. Kahn MD
 Daniel Kamin, MD
 Christine K. Lee MD
 Jessica Lee MD
 Jenifer R. Lightdale MD, MPH
 Eric S. Maller MD
 Daniel Mallon MD
 Michael Manfredi MD
 Randolph M. McConnie MD
 William S. Mow MD
 Andrew Mulberg MD
 Mark Naddaf MD
 Susan Peck CRNP
 Julia Perkins RN, CPNP
 David A. Piccoli MD
 Randi G. Pleskow MD
 D Brent T. Polk MD, AGAF
 Simon Rabinowitz MD, PhD
 Jyoti Ramakrishna MD
 J Marc Rhoads MD
 Paul Rufo MD, MMSc
 Shehzad A. Saeed MD
 Adrienne Scheich MD
 Steven M. Schwarz MD, FAAP, FACN,
 AGAF
 Jocelyn Silvester MD, PhD
 James Squires MD, MS
 John F. Thompson MD
 Patrika Montricul Tsai MD
 David N. Tuchman MD
 Menno Verhave MD
 Hongtao (Alex) Wang MD
 Anne A. Wolf MD
 Hengqi (Betty) Zheng MD

James Heubi Timeline Fund

Estella M. Alonso MD
 Amal Aqul MD
 Ana Catalina Arce Clachar MD
 Karla Au Yeung MD
 Christina B. Bales MD
 Jane Balint, MD
 Lee Bass MD
 Dennis D. Black MD
 Brendan M. Boyle MD
 Carolyn Sullivan Burklow MD
 Alexandra Carey MD
 Mitchell B. Cohen MD
 Valeria Cohran MD
 Justin De Boer MD
 Looi Ee MBBS, PhD
 Peter R. Farrell MD, MS
 David Galloway MD
 Benjamin D. Gold MD
 Jennifer Hellmann MD

Margo Heubi
 Van S. Hubbard MD, PhD
 Samar Ibrahim MBChB
 M. Raphaelle Jean MD, MPH
 Stacy A. Kahn MD
 Ajay Kaul MBBS MD
 Samuel Kocoshis MD, FAAP
 Rohit Kohli MBBS, MS
 Donald Wayne Laney, Jr. MD
 Larry Glen Lewis MD
 Jenifer R. Lightdale MD, MPH
 Daniel Mallon MD
 Randolph M. McConnie MD
 Sean Moore MD, MS
 William S. Mow MD
 Sarah R. Myers BSN, RN, CPN
 Mark Naddaf MD
 Deborah A. Neigut MD
 Molly O’Gorman-Picot MD
 Maria M. Oliva-Hemker MD
 Bankole Osuntokun, MD
 Joseph Palermo MD, PhD
 Simon Rabinowitz MD, PhD
 Robert J. Rothbaum MD
 David A. Rudnick MD, PhD
 Shehzad A. Saeed MD
 Elizabeth Schaefer MD
 Ann O. Scheimann MD, MBA
 Kathleen B. Schwarz MD
 Steven M. Schwarz MD, FAAP, FACN
 Manu Raj Sood MD
 James Squires MD, MS
 Flora Szabo MD
 Phillip I. Tarr MD
 Justine Turner MBBS, PhD, FRACP
 Menno Verhave MD
 Stavra Xanthakos MD
 Nada Yazigi MD
 Wahaj Zaidi, MD

Teri Li Fund

Zeyad Abdulkader MD
 Amal Aqul MD
 Christina B. Bales MD
 Lee Bass MD
 Dennis D. Black MD
 Jeffrey B. Brown MD
 Carolyn Sullivan Burklow MD
 Mitchell B. Cohen MD
 Joseph M. Croffie MD
 Looi Ee MBBS, PhD
 Karan McBride Emerick MD, MSCI
 Jeffrey C. Fahl MD
 Drew Feranchak MD
 Glenn T. Furuta MD
 Irene Gamra MD
 Melvin B. Heyman MD
 Sohail Husain MD
 Robert M. Issenman MD

Katja Kovacic MD
 Ian H. Leibowitz MD
 Alan M. Leichtner MD, FAAP, MS-HPED
 Joseph Levy MD
 B Li MD
 Daniel Mallon MD
 Petar Mamula MD
 Randolph M. McConnie MD
 William S. Mow MD
 Mark Naddaf MD
 Inna Novak MD
 Maria M. Oliva-Hemker MD
 Kevin O’Meara MD
 Uma Phatak MD
 Rebecca Pipkorn RD, CNSC
 Simon Rabinowitz MD, PhD
 Sally Schwartz RD, CSP, LDN
 Steven M. Schwarz MD, FAAP, FACN
 Thomas J. Sferra MD
 Ameesh A. Shah MD
 Mitchell D. Shub MD
 James Squires MD, MS
 Patrika Montricul Tsai MD
 Justine Turner MBBS, PhD, FRACP
 Menno Verhave MD
 Sarah Vermilyea MS, RD, CSP, LD, CNS
 Christine E. Waasdorp Hurtado MD
 Fernando Zapata MD





NASPGHAN FOUNDATION PARTNERS PROGRAM

The NASPGHAN Foundation has developed a Partners Program designed to increase dialogue about the science and practice of pediatric gastroenterology, hepatology and nutrition. Partners work strategically with the NASPGHAN Foundation to advance pediatric patient care through research, education, policy, legislation, and emerging issues. Annual meetings are held for all Partners to interact with NASPGHAN and Foundation leadership, share information, address topics of common interest, discuss trends and exchange views quickly and securely.

THANK YOU TO OUR 2023 FOUNDATION PARTNERS

PLATINUM

AbbVie/Ironwood
 Albireo Pharma Inc.
 Mirum Pharmaceuticals, Inc.
 Nutricia North America, Inc.
 Pfizer, Inc.
 Reckitt/Mead Johnson Nutrition
 Sanofi/Regeneron

GOLD

Abbott
 Alcresta Therapeutics, Inc.
 ByHeart
 EvoEndo
 Fresenius Kabi
 Janssen Immunology
 Kate Farms
 Lilly
 NeurAxis

SILVER

Bristol Myers Squibb
 Functional Formularies
 Olympus America, Inc.
 Takeda Pharmaceuticals, Inc.

THANK YOU TO OUR 2022 – 2023 FOUNDATION SUPPORTERS

Abbott
 AbbVie/Ironwood
 Albireo Pharma Inc.
 Alcresta Therapeutics, Inc.
 Allakos
 Bristol Myers Squibb
 ByHeart
 Crohn's & Colitis Foundation
 Cyclic Vomiting Syndrome Association
 EvoEndo
 Fresenius Kabi
 Functional Formularies
 Janssen Immunology
 Kate Farms
 Lilly
 Medtronic
 Mirum Pharmaceuticals, Inc.
 Nutricia North America, Inc.
 NeurAxis
 Olympus America, Inc.
 Pfizer, Inc.
 QOL Medical, LLC
 Reckitt/Mead Johnson Nutrition
 Regeneron
 Sanofi/Regeneron
 Takeda Pharmaceuticals, Inc.
 Travele Therapeutics

